

WARNING

This is an electrical component for professional equipment manufacturers.
Please read these user instructions carefully.

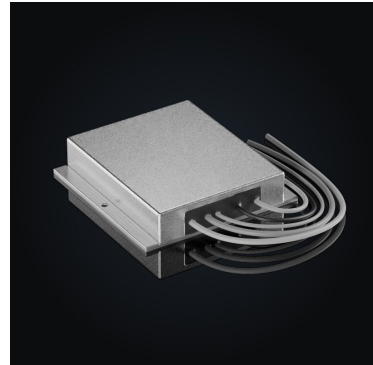


During operation of the DC-Converter, certain parts inside the device are under dangerous voltage. It is therefore essential to observe the points listed under "Safety and Installation" carefully! Improper handling of electrical modules can lead to electric shock resulting in serious injury and damaged applications.

Do not use without protective earth!



Do not touch the uninsulated cable ends!
They can be charged with a dangerous voltage.



SAFETY AND INSTALLATION

The installation and operation of this DC-Converter must comply with national safety regulations.
This DC-Converter is galvanically isolated. There is a secure isolation due to reinforced insulation.

The installation, commissioning and maintenance of the product may only be carried out by trained expert personnel.
The following points must be observed:

- > This is a built-in device for professional equipment manufacturers.
- > The terminals must never be accessible to the operators.
- > The heatsinking aluminum baseplate / the case must be connected to earth potential.
- > The positive input line must be protected by a fuse, with a maximum of 35A.
- > Safe disconnection of the device must be considered in the end application.
- > The connection to the supply and to the load needs to be power-less and voltage-free for its intended

In order to achieve maximum output power of this device, the heat dissipation must be sunk through the aluminum baseplate.
Its temperature must not exceed 90°C, or it will shut down automatically.
Any temperature gradient on the device must also be considered.

STORAGE

The modules must be stored in a dry, dust-free environment with ambient temperatures between -10°C and 65°C.

The storage period must not exceed 25 days under such extreme conditions.

Please check technical datasheet for further information published on our website www.demke-electronic.com.

All technical and general information is provided in all conscience. We reserve the right to change specifications at any time.

COMPLIANCE

Safety aspect:

This DC-transformer is tested according to the standard EN60950-1 as a build-in product. The unit was not tested for connection to DC mains. The power supply shall be properly bonded to the main protective bonding terminal in the end product.

EMC aspect:

As this is a Component-PSU for professional equipment manufacturers for built-in purposes and since the product does not fulfil an autonomous function, we use IEC61204:2001-11 for assistance only. Further EMC-testing in the end application is required.

This product is designed for industrial environments. The product may cause electromagnetic disturbances in residential, business- or in small-scale-industrial surroundings. The user might possibly have to take appropriate actions to reduce the disturbances.

If several devices are connected in parallel, EMC behavior needs to be determined in the end application as well, since we do not have any information on the circuitry.

WARRANTY

Every returned device that is declared defective passes through our internal analysis procedure, provided it is within the warranty period. If the failure is due to a manufacturing defect or a technical failure, we will repair or replace the device free of charge. Demke offers no warranty for failures caused in protective components and resulting malfunctions thereof.

We have no control over the way the devices are installed, nor the type of electrical system in which the transformers are installed on. Furthermore, we are not responsible for the condition of such systems. Nor can we control the load and operating environment in which the modules are used. The warranty is limited to the replacement of the defective device. We are expressly not liable for consequential damage and collateral damage of any kind. Devices that are obviously damaged, used improperly, stored improperly or have been improperly maintained are excluded from any warranty. Any liability claims arising from the operation of the application itself, the product design of the buyer and any help with the installation, Demke Electronic declines decisively. The buyer is the sole responsible for the use of Demke products. Before applications are sold with Demke products installed, the buyer must provide an appropriate design, conduct all necessary tests, and implement operational safety aspects.

To qualify for warranty, the buyer must submit a service request within the contractual warranty period by contacting Demke Electronic and applying for a Return Authorization (RMA) Number. The buyer pays the cost of returning the product to the factory. Demke covers the costs for reshipment.

PROOF OF QUALITY

Demke Electronic DC/DC converter are produced and individually tested in Germany according to our high-quality standard and in compliance with the guidelines according to ISO 9001. Our producers are evaluated with the highest care. Each device is shipped only after passing quality and functional tests.

Please check technical datasheet for further information published on our website www.demke-electronic.com.

All technical and general information is provided in all conscience. We reserve the right to change specifications at any time.